

STORMWATER FOR DIRECT USE

PILOT PROGRAM



Evaluating rainfall's potential

Southern California's water resources increasingly rely on a diverse water supply portfolio. Since early 2020, Metropolitan Water District of Southern California has evaluated local stormwater capture projects to better understand their performance and regional water supply benefits. This program provides financial incentives to develop, monitor and assess new or existing direct-use stormwater projects across the district's service area.

What is direct use?

Direct-use projects capture local rainfall and stormwater runoff. The captured water is typically stored in an underground cistern and used to meet non-potable demands.

Project types

New construction projects entail construction of a rain capture system and installation of metering equipment.

Retrofit projects entail an installation of metering equipment at existing project sites.

Who can apply for funding?

The pilot program is open to commercial, institutional and industrial sites within Metropolitan's service area. Applications must be submitted by Metropolitan member agency where the project is located.

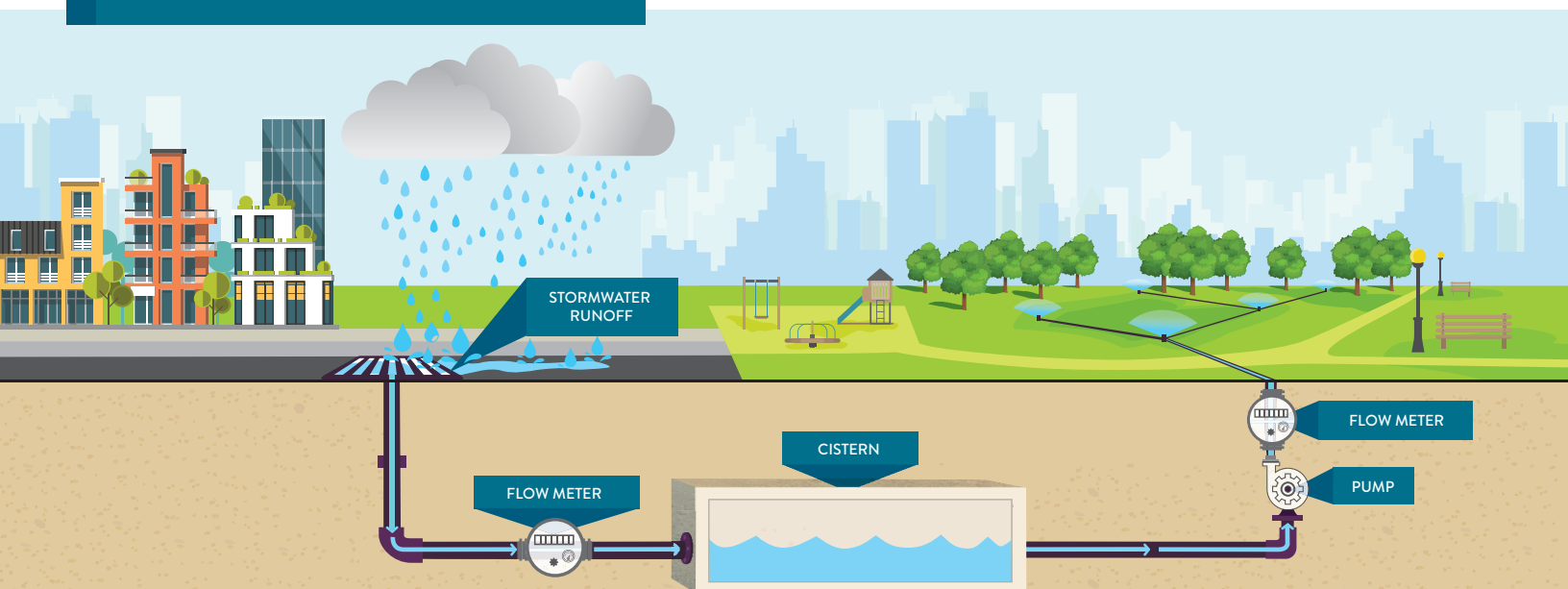
Projects are subject to review and selected on a first-come, first-served basis per climate zone (coastal, mid, inland) and project type (new or retrofit). Funding is secured once approved.

Criteria

To be eligible to participate in the pilot program, project must:

- Include meter(s) for measurement of capture and use
- Offset potable or reclaimed water use
- Be within Metropolitan's service area
- Have an estimated minimum design capture and use of one acre-foot per year
- Have completed CEQA documents, if needed
- Submit project schedule
- Submit original project construction cost at the time of application (for retrofit projects only)

HOW DIRECT USE WORKS



Funding

PROJECT TYPE	FUNDING COMPONENTS	
	Construction/Installation	Monitoring & Reporting
Retrofit	Up to \$100,000 of eligible costs (design, material, installation)	\$20,000/report
	Capped at \$160,000/project	
New Construction	1:1 match, up to \$440,000 of eligible costs (design, material, construction)	\$20,000/report
	Capped at \$500,000/project	

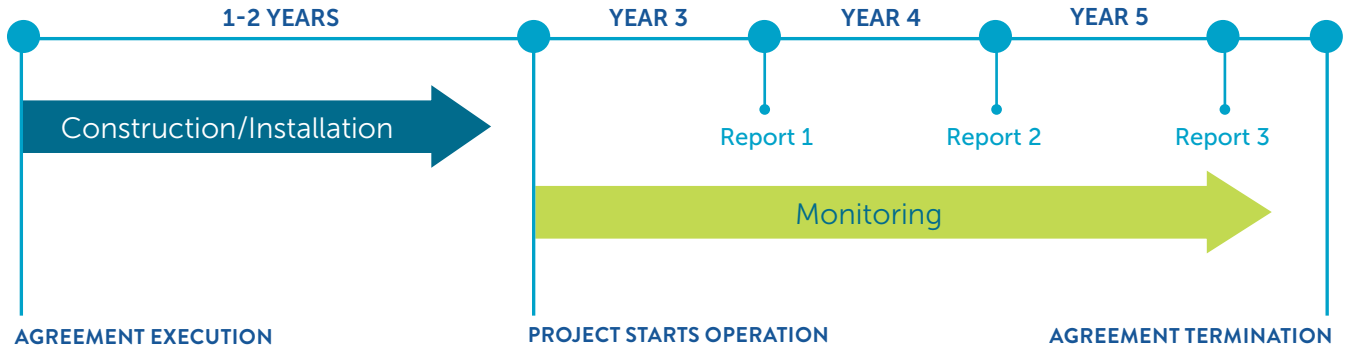
Timeline

RETROFIT PROJECTS

1. Projects have one year from agreement execution to complete installation of metering equipment and begin monitoring
2. Three years of monitoring and reporting

NEW CONSTRUCTION PROJECTS

1. Projects have two years from agreement execution to complete construction and installation of metering equipment, start operation, and begin monitoring
2. Three years of monitoring and reporting



ABOUT METROPOLITAN

The Metropolitan Water District of Southern California is a state-established cooperative of 26 member agencies – cities and public water agencies – that serve 19 million people in six counties. Metropolitan imports water from the Colorado River and Northern California to supplement local supplies and helps its members develop increased water conservation, recycling, storage and other resource management programs.

OUR MISSION

The mission of the Metropolitan Water District of Southern California is to provide its service area with adequate and reliable supplies of high-quality water to meet present and future needs in an environmentally and economically responsible way.

Contact



Noosha Razavian
 StormwaterDirectUse@mwdh2o.com
 213.217.6492



@mwdh2o

mwdh2o.com/StormwaterDirectUse

MWD Imaging Services
 October 2020